







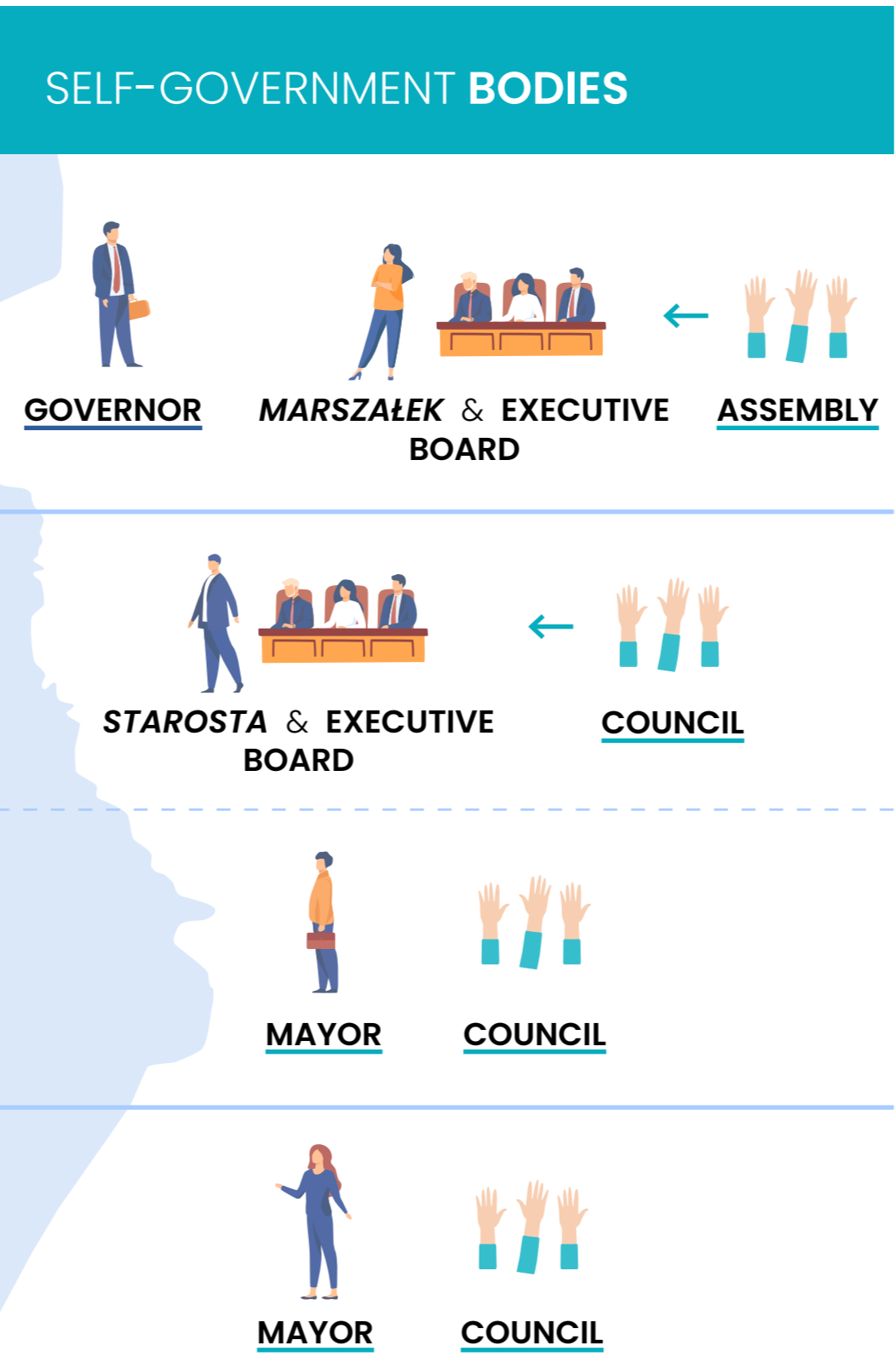


Self-government in Poland: the basics



LEVELS OF ADMINISTRATIVE DIVISIONS	NUMBERS*
 PROVINCES (voivodeships)	 16
 COUNTIES (poviats)	 314
 CITIES WITH COUNTY RIGHTS	 66
 MUNICIPALITIES (gminas)	 2 477

Local self-government is exercised at all three levels



IN PROVINCES, administrative authority is shared between a **central government-appointed governor** (*voivode*), an **elected assembly** (*sejmik*), and an executive board (*zarząd województwa*) chosen by the assembly. The executive board is headed by the *marszałek*.

COUNTIES have an **elected council** (*rada powiatu*) which elects an executive board (*zarząd powiatu*) headed by a *starosta*.

CITY COUNTIES have their own **elected council** (*rada miejska, rada miasta*) and a directly **elected mayor** (*prezydent*).

MUNICIPALITIES have an **elected council** and a directly **elected mayor** (known as *prezydent, burmistrz, or wójt*).

* According to Statistics Poland as of 1 January 2020

Public consultation process in self-government units in Poland

CASE STUDY

Public consultations conducted under the project entitled **The concept of solving bicycle traffic in the Zoliborz District** within projects submitted to the participatory budget of the Capital City of Warsaw, carried out on January 25 – February 19, 2016.

01 INITIATING

Zoliborz District Office initiated consultations on solutions to bicycle and pedestrian traffic in the Zoliborz District (Warsaw).

02 PREPARING

In cooperation with the Road and Communication Office, it was analysed traffic flows and made first assumptions.

03 INFORMING

The District Office defined communication channels (traditional and virtual), informed residents on the subject of consultations, and advised of meeting locations and dates.

04 CONSULTING

Residents participated in the consultations during two organized public discussions and separate meetings with contractors.

05 GATHERING OPINIONS

Based on the collected opinions, 53% of comments were taken into account, 18% - were partly considered, 29% - were rejected.

06 SHARING INFORMATION ON DECISIONS TAKEN

Upon consultations completion, all participants and stakeholders received a summary of the results of consultations.

IMPLEMENTATION

The project has been implemented based on collected residents opinions by a contractor selected through a public procurement procedure.

07 EVALUATION

Zoliborz District Office evaluated the consultation process – whether the assumed goal of the process has been achieved, what methods of operation have worked and what have not.

EVALUATION

INITIATING

PREPARING

INFORMING

SHARING
INFORMATION
on decisions taken

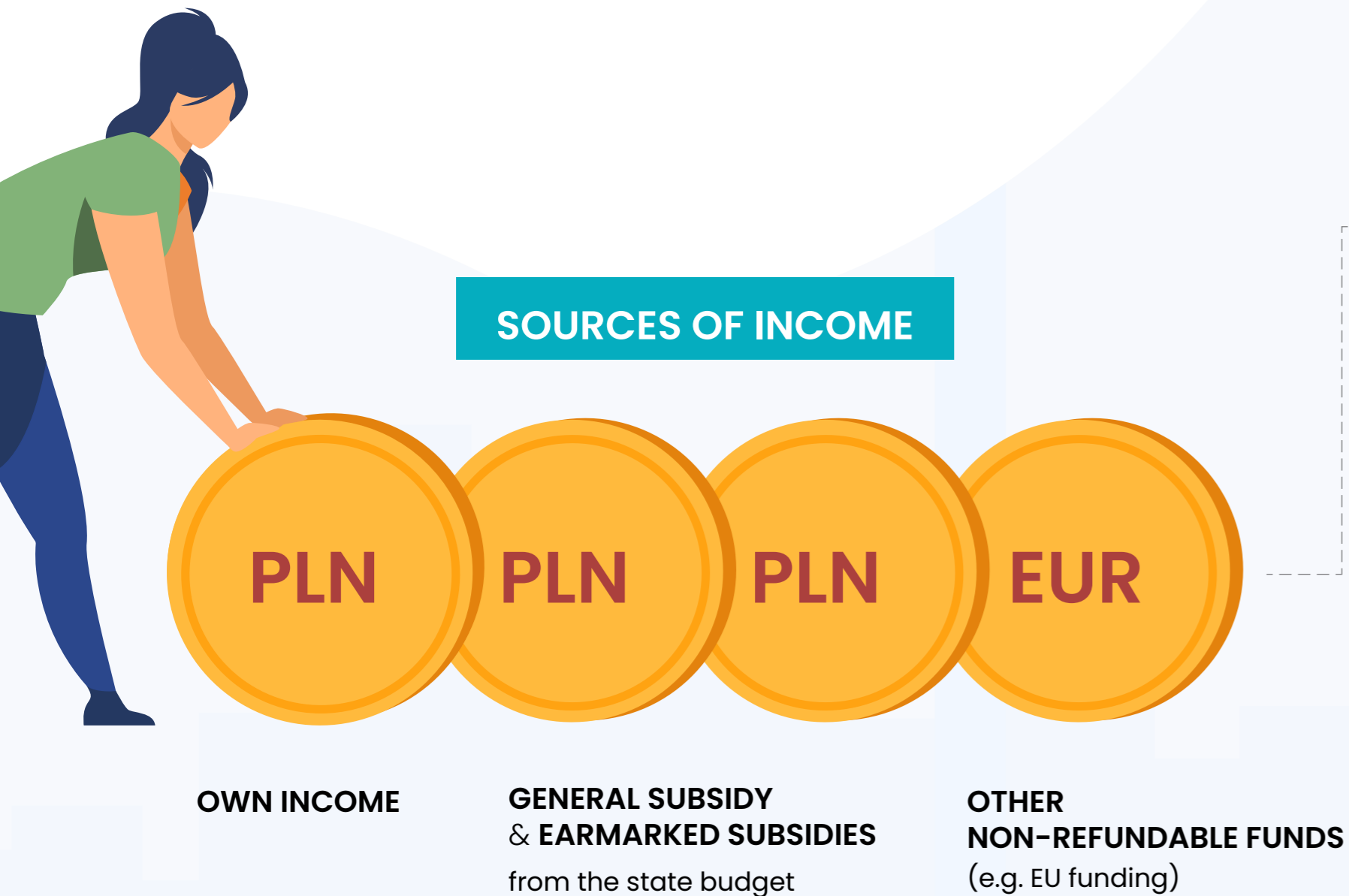
GATHERING
OPINIONS

CONSULTING

IMPLEMENTATION



Select aspects of **financing** of local government units in Poland



YEARLY BUDGET

Basic instrument for budgetary management

INCOME

EXPENDITURES



RULES ON GENERAL RESERVE

GENERAL RESERVE

The general reserve should not be less than 0.1% and not more than 1% of the budget expenditure

0.1-1%

SPECIAL PURPOSE RESERVES

The special purpose reserve may not exceed 5% of the budget expenditure

<5%

BUDGET EXPENDITURE

REGIONAL CHAMBER OF ACCOUNTS

External and independent body for the control and supervision

INDIVIDUAL DEBT INDEX

Limits on debt are established for each unit individually



EU funds in national and regional operational programs for 2014-2020

Source: <https://www.funduszeuropejskie.gov.pl>

NATIONAL OPERATIONAL PROGRAMS (NOP) (EUR BILLION)



REGIONAL OPERATIONAL PROGRAMS (ROPS) (EUR BILLION)



* In the 2014-2020 programming period, Mazowsze was recognized by the European Commission as a more developed region, and other voivodeships as less developed regions, depending on the level of GDP per capita in the region in relation to the EU average.

Polish crisis management system at different levels

